

# Compass Directions!



Geography  
05.02.21

# Today's Learning

To understand how to read directions on maps using the points of the compass.

## Success Criteria

- To recognise the purpose of a compass.
- To identify the points of the compass.
- To use the points of the compass to provide directions.



# What Is This?

What is it used for?

Where might you use it?

When might you use it?

Who would use it?

Why might you use it?

Talk to your  
grown up  
about your  
ideas.





## A circular inset image showing a compass rose overlaid on a background of a financial table with numerical data. The compass rose is centered, with cardinal directions (N, E, S, W) and intercardinal directions (NE, SE, SW, NW) marked. The background table contains various numerical values, likely representing financial metrics or stock prices, arranged in columns and rows. The entire image is framed by a thick orange border.

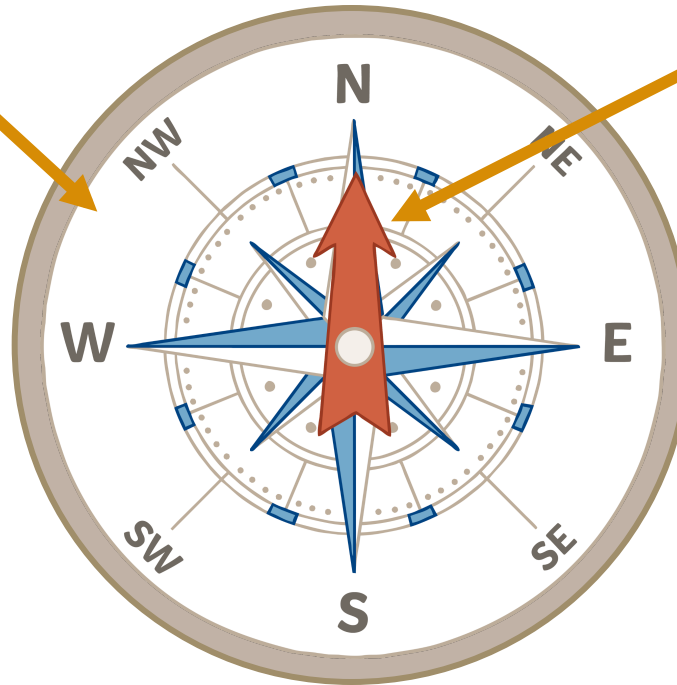


# How Does a Compass Work?

A compass has:

A dial used to show direction.

Compasses have been used for over 2000 years!



A magnetic needle which can move freely.

Wherever you stand on earth, a compass will always point to the north magnetic pole!

A compass needle aligns itself and points towards the top of the Earth's magnetic field – the north pole. If the needle points to the N on the compass dial, then the compass is pointing north and can be used to find directions.

# What Are the Points of a Compass?

Compasses have been used for over 2000 years.

A compass is an important tool for finding direction. It helps you to find your way when you are using a map.

There are four main points of the compass: **north, east, south and west**. These are called compass points.



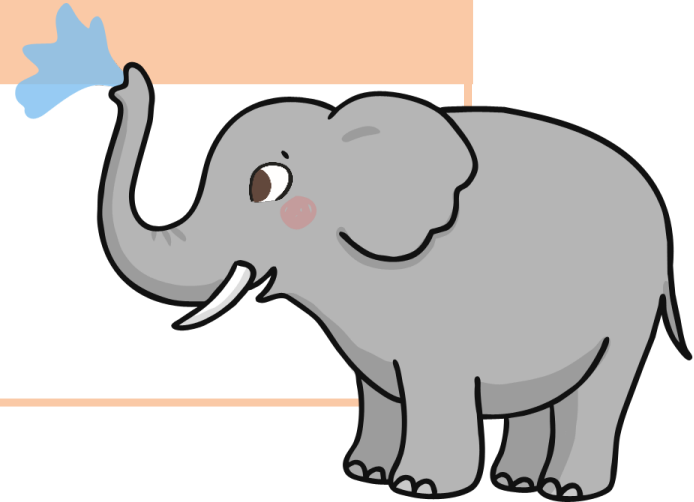
Can you think of an easy way to remember the order of the compass points?

For example:

**N**ever **E**at **S**illy **W**orms

or

**N**aughty **E**lephants **S**quirt **W**ater



# What Are the Points of a Compass?

Can you think of an easy way to remember the order of the compass points?

Mrs Riley always says:

**N**ever **E**at **S**hredded **W**heat!

Never = North

Eat = East

Shredded = South

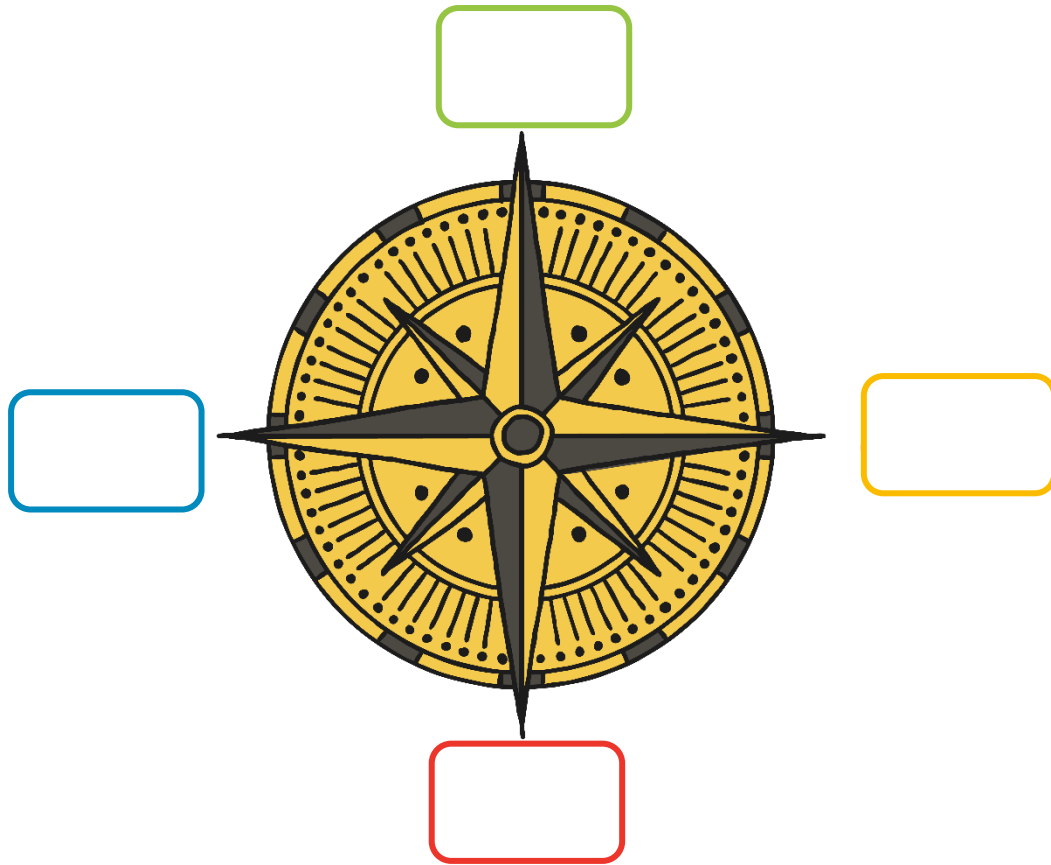
Wheat = West



# What Are the Points of a Compass?

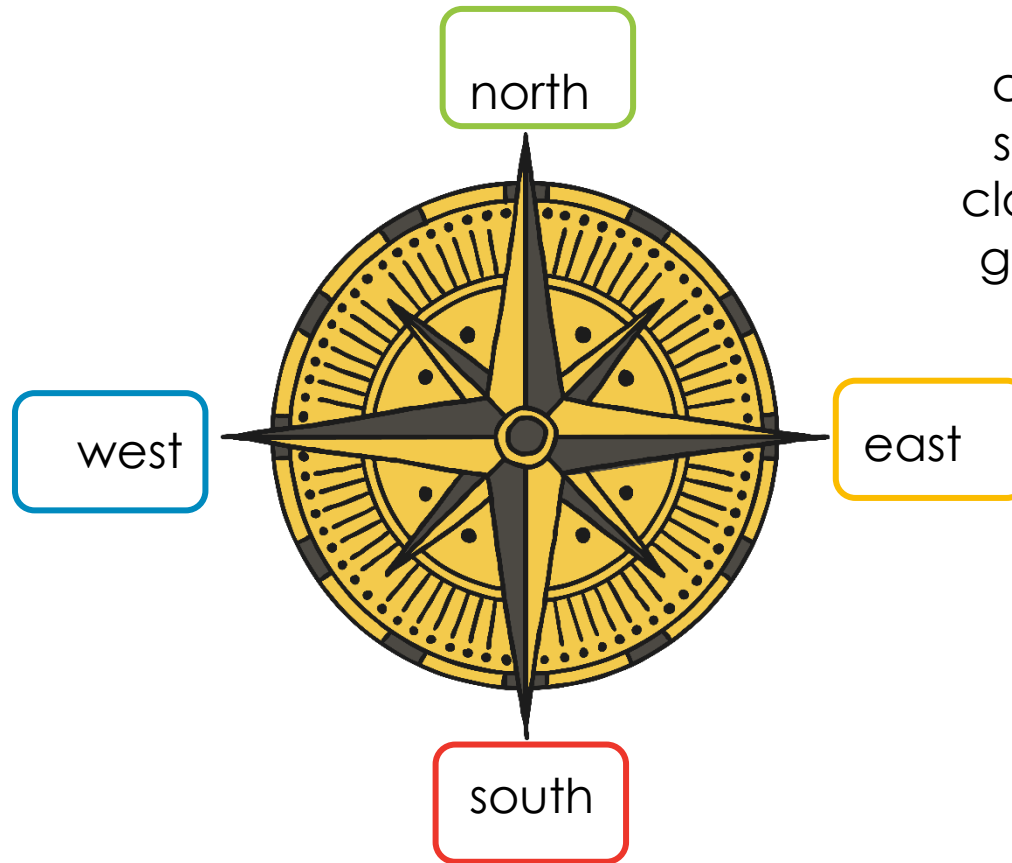
**What is missing from the compass?**

Talk to your grown up about your ideas





# What Are the Points of a Compass?



You read a compass in the same way as a clock! Talk to your grown up about this.

Watch this video to help you remember the compass points:

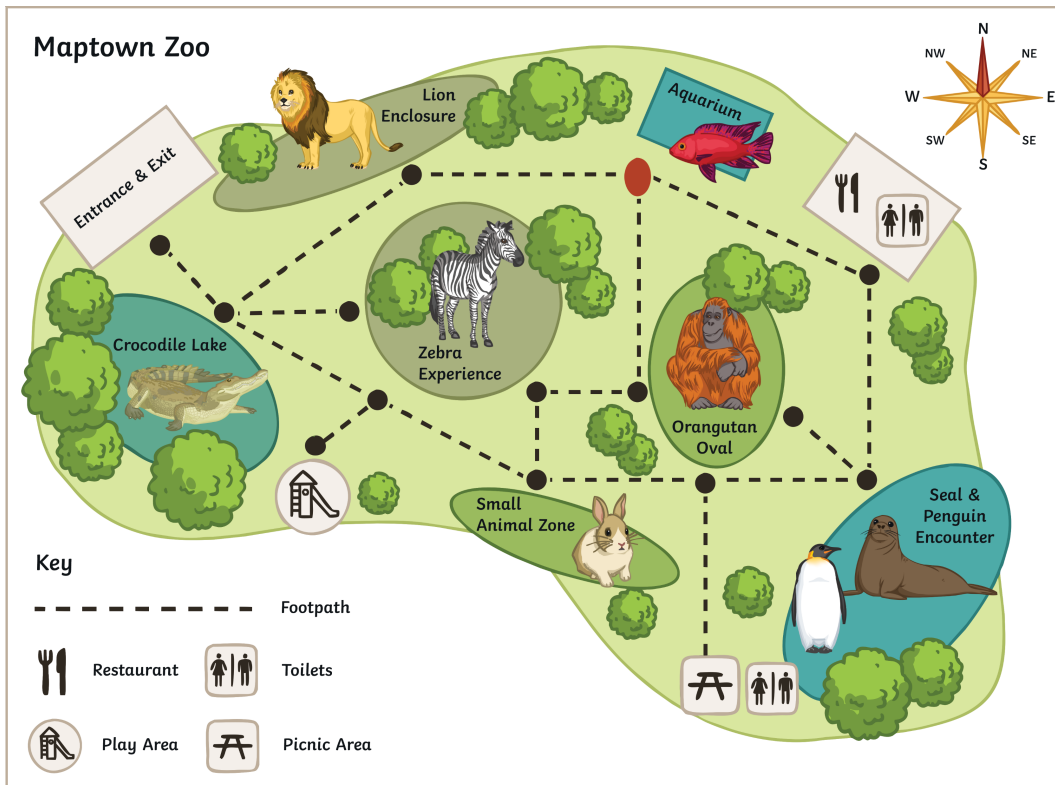
[https://www.youtube.com/watch?v=f2l81\\_BFb-s](https://www.youtube.com/watch?v=f2l81_BFb-s)

# Welcome to the Zoo!

This is a map of a Zoo.

All maps should have a compass rose on them. You can use the north arrow to find north.

Hint: north usually points to the top of the map!



You can the compass rose to help you work out which direction to walk.

## Example:

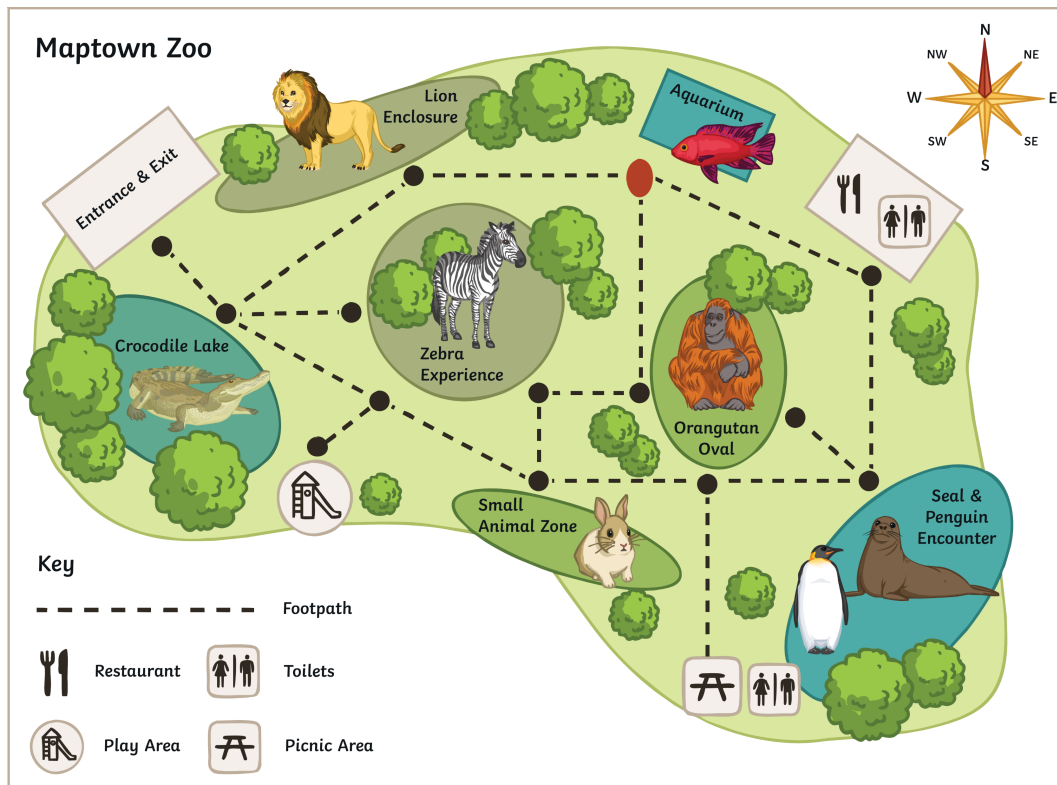
If I am standing at the picnic area I would walk north to get to the Orangutan Oval.

Talk to your grown up about how to do this.

# Giving Directions.

## Your turn

Hint: north usually points to the top of the map!



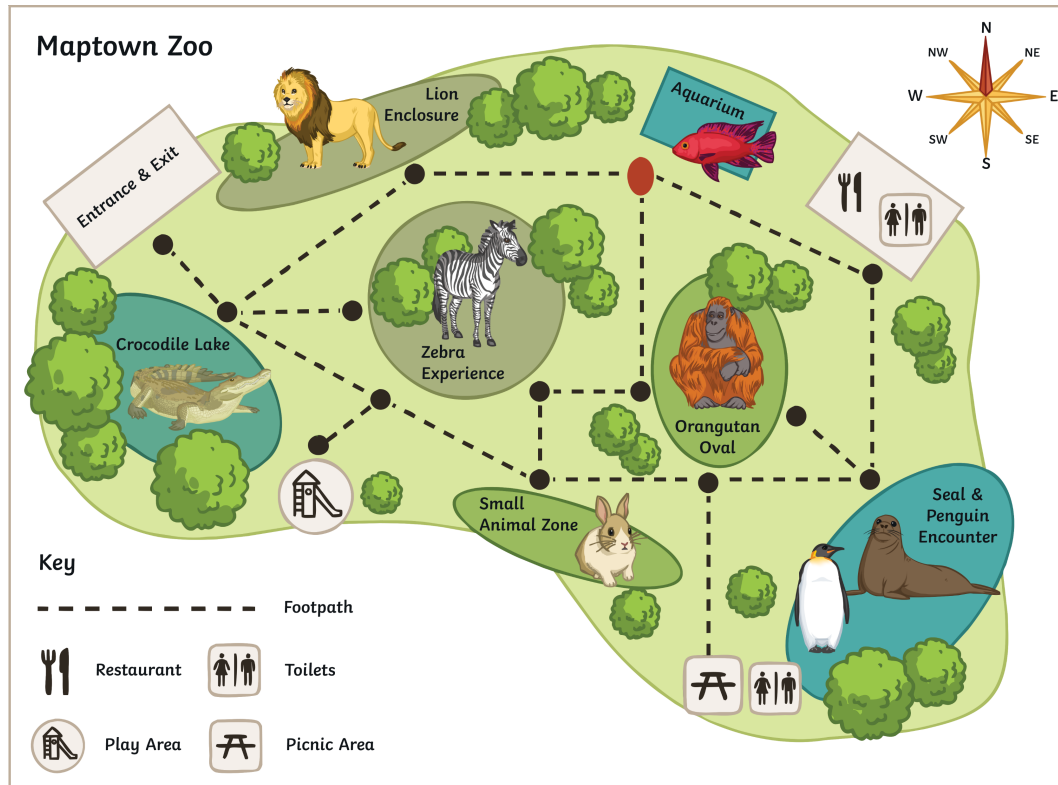
If you were standing by the aquarium, which direction would you walk to go to:

- a) The Lion Enclosure?
- b) Orangutan Oval?

Use the compass rose to help you work out which direction to walk.

# Giving Directions: Answers

Hint: north usually points to the top of the map!



If you were standing by the aquarium, which direction would you walk to go to:

- a) The Lion Enclosure?
- b) Orangutan Oval?

a) To get to the Lion Enclosure I would walk west.

b) To get to the Orangutan Oval I would walk south.



Follow the directions and write down where you are at each point.

Take care to count the squares carefully.

### Compass Directions: The Town

1. From the start, go NORTH 4 squares. Where are you now?
2. Go 3 squares to the EAST. Where are you now?
3. Go 3 squares to the SOUTH. Where are you now?
4. Go 4 squares to the WEST. Where are you now?
5. Go 5 squares NORTH. Where are you now.
6. Go 3 squares SOUTH and then 2 squares WEST. Where are you?
7. Go 3 squares SOUTH. Where are you?
8. Go 4 squares EAST, 2 squares NORTH then 3 squares WEST. Where are you?





Well Done Year 2!